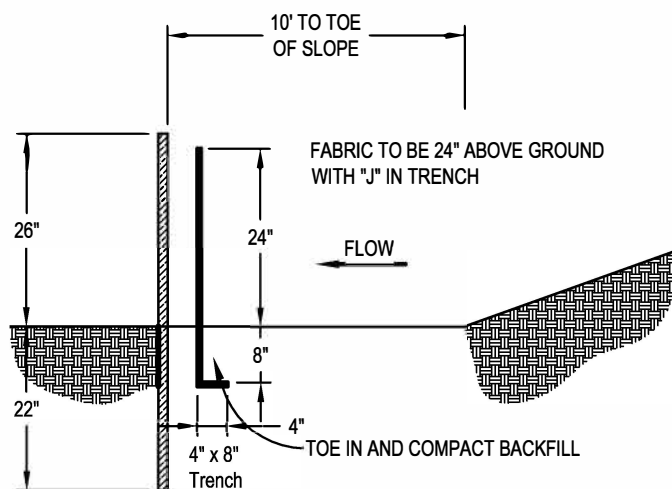


SD C-SYS



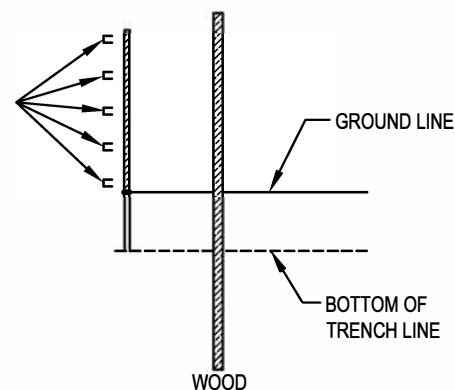
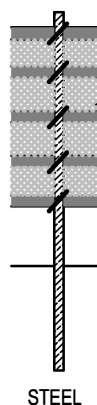
MINIMUM OF 8" BLACK UV 120 LBS.  
ZIP TIES FOR STEEL  
1" X 1 1/4" STAPLES FOR WOOD

TO BE PLACED AT EACH  
SUPPORT BELT.  
(5 BELTS TOTAL) BOTTOM  
STAPLE OR WIRE TIE IS AT  
GROUND LEVEL.

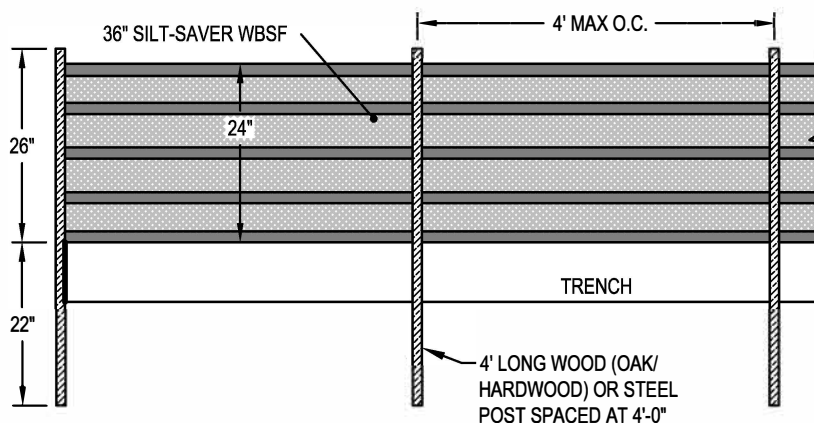


## SIDE VIEW

USE STEEL POSTS THAT ARE 1.15-1.25 MIN.  
USE WOVEN-IN BELTS AS ATTACHMENT POINTS  
FOR THE TIES.

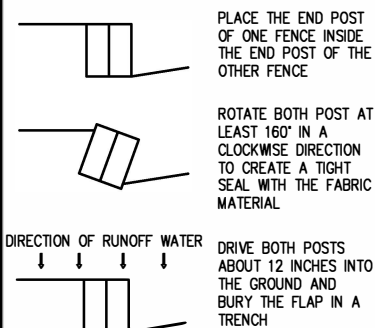


USE OAK/HARDWOOD POST  
MINIMUM 1 1/4" X 1 3/4" X 48"



## FRONT ELEVATION

### REPAIR DETAIL ATTACHING TWO SILT FENCES WHEN TRENCHING IS USED



## PLAN VIEW

## HEAVY DUTY WOVEN BELTED WBSF SD C SYSTEM

FRAME MATERIAL: OAK/HARDWOOD OR STEEL

FILTER FABRIC MATERIAL: REFER TO SPEC

SCALE: NOT TO SCALE

LAST UPDATED: 04-27-20 G